

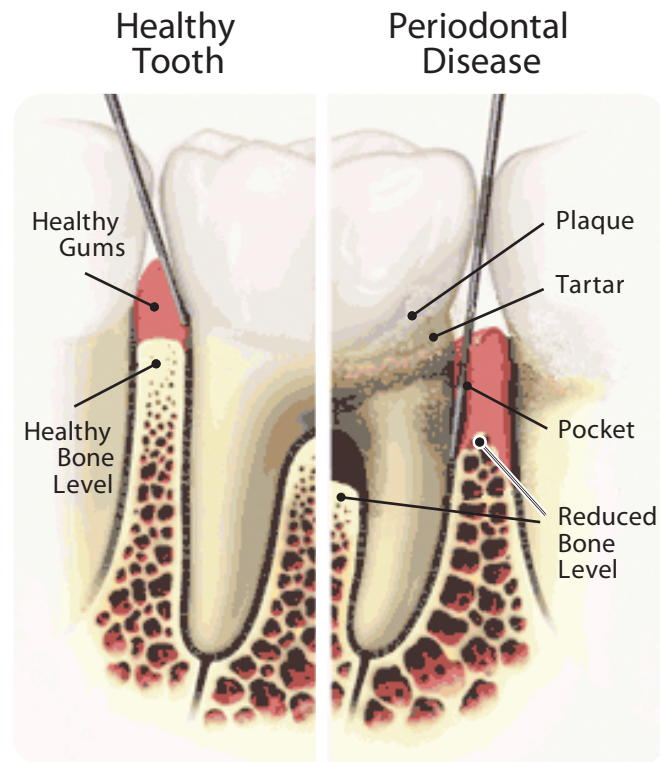


Dental Health Facts

With good oral hygiene and regular professional care, your teeth are meant to last a lifetime. However, if left untreated, periodontal (gum) disease can lead to tooth loss.

- Warning signs of periodontal disease include: gum bleeding; swollen, tender gums; bad breath; loose or separating teeth; receding gums making the teeth look longer; changes in your bite or fit of your partial denture.
- Thirty percent of the population may be genetically susceptible to gum disease. Gum disease is the primary cause of tooth loss in adults 35 and older.
- Periodontal disease is linked to heart and respiratory diseases; preterm, low birthweight babies; stroke; osteoporosis; and diabetes.
- With new periodontal treatments many patients find they are back to normal routines the same or next day.
- Dental implants are so natural-looking and feeling that many patients forget they ever lost a tooth.
- Dental implants are a permanent tooth-replacement option for teeth lost to trauma, decay, injury or periodontal disease.

A comprehensive approach
to esthetics,
health and function



Dr. Michael D. Edwards

PERSONAL LIFE

Hometown: Carmel, Indiana

Dr. Edwards is happily married to his wife Michelle, who is a pediatric dentist. They have three children. His favorite hobbies are golf, reading, and spending time outdoors.

EXPERIENCE

Dr. Edwards has performed thousands of surgical procedures involving periodontal surgery, gum grafting, tooth removal and dental implants.

EDUCATION AND CERTIFICATIONS

- Board Certified, American Board of Periodontology since 2005
- Periodontal/implant/sedation training and Masters in Dental Science in 2004, Indiana University School of Dentistry
- Certified in I.V. conscious sedation
- D.D.S. degree from Indiana University School of Dentistry in 2001
- Double major in Chemistry and Biology, Indiana University (Bloomington) in 1996

PROFESSIONAL ORGANIZATIONS

- Academy of Osseointegration
- International Team for Oral Implantology (ITI)
- American Dental Association
- American Academy of Periodontology
- Indiana Society of Periodontists



Implant Dentistry and Periodontics

Michael D. Edwards, DDS, MSD



9865 E. 116th Street, Suite 100
Fishers, Indiana 46037
317.842.2273 voice / 317.842.7911 fax

8801 N. Meridian Street, Suite 103
Indianapolis, Indiana 46260
317.574.0600 voice / 317.574.0606 fax

info@indyimplants.com / www.indyimplants.com
Diplomate of the American Board of Periodontology

Dental Implants

- Dental implants help keep your healthy jawbone intact
- Many times, better cosmetics are achieved with dental implants
- Dental implants look and feel most like natural teeth
- Implants are the most successful and longest lasting form of tooth replacement



Extraction Site Preservation

- When a tooth is removed the bone reacts by shrinking and melting away
- Bone that has thinned and flattened through this process can make your face look older
- Having deficient bone can compromise the results of adjacent teeth
- Maintaining your bone at the time of tooth removal avoids future problems
- Maintaining your bone will give you better options for tooth replacement



Our philosophy is to bring you and your dentist into the decision-making process of what will best meet your needs and desires for your oral health and appearance.

Before the appointment, think of any questions you may have and write them down prior to coming to your appointment. Additionally, think about what is important to you with your care, and be sure to let us know.

Upon arrival, you can expect to spend time with the doctor's assistant who will interview you regarding your dental condition and pertinent general health history. Next, the doctor will examine your mouth. At the conclusion of your examination, the doctor will provide you with an explanation of your condition(s) and what choices you might consider in resolving them. You will be given time to ask questions for clarification or further explanation. We will then report the outcome of this examination to your dentist.

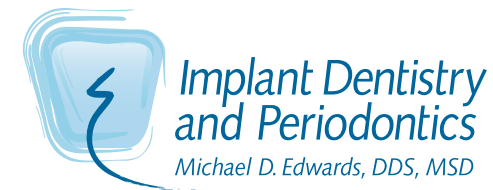
Our office works with all insurance companies, and our insurance coordinators will do their best to provide you with accurate coverage estimates based on the information available to us.

Treatments are highly individualized as well as our financial arrangements with our patients. For your convenience, we offer a variety of payment options. Our financial coordinator will help find options that are well-suited for your individual needs.

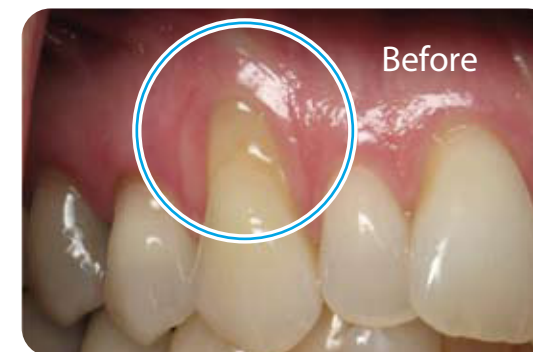
Services

Comprehensive services offered include advanced periodontal plastic surgical procedures, removal of teeth, aesthetic dental implants, procedures associated with dental implants to augment bone and soft tissue, the treatment of periodontal disease, the treatment of 'gummy' smiles, the coverage of exposed root surfaces and more.

A comprehensive approach to esthetics, health and function



Root Exposure



Root Exposure

Root exposure is a condition in which the gumline begins to recede to the point where the tooth root becomes exposed.

- Gums are the backdrop of a healthy smile
- Improving the integrity of your gums prevents tooth loss
- Leveling your gums can enhance your smile
- Adding gum tissue can reduce sensitivity and protect from decay
- We use advanced techniques to ensure great results with little discomfort

Short Teeth

- We can instantly improve your smile by exposing more of your own hidden teeth
- Exposing the tooth involves one procedure with minimal discomfort
- Thick gums are hereditary and can be reshaped to enhance your smile

